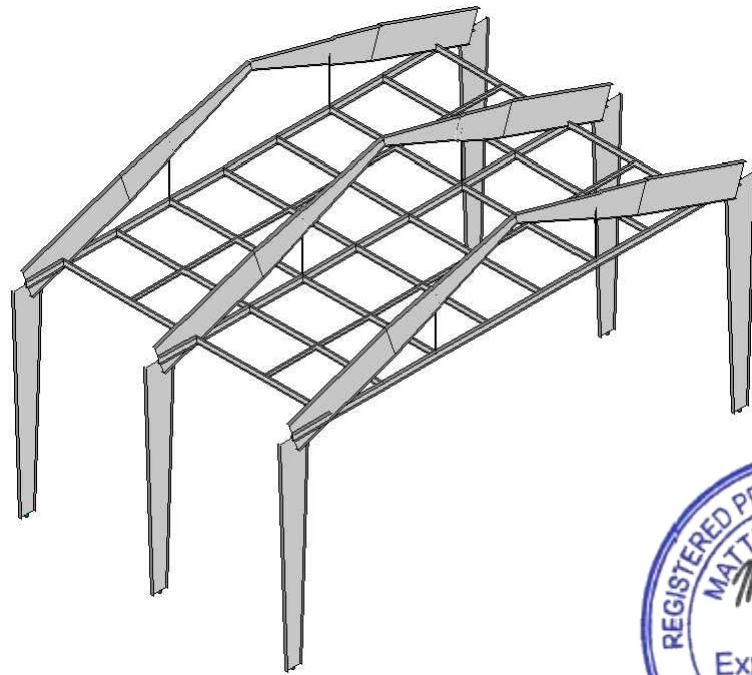


SHOWBIZ STUDIOS STAGE 4



LENGTH = 101'-9"
 WIDTH = 67'-2"
 GRID HT. = 30'-0"

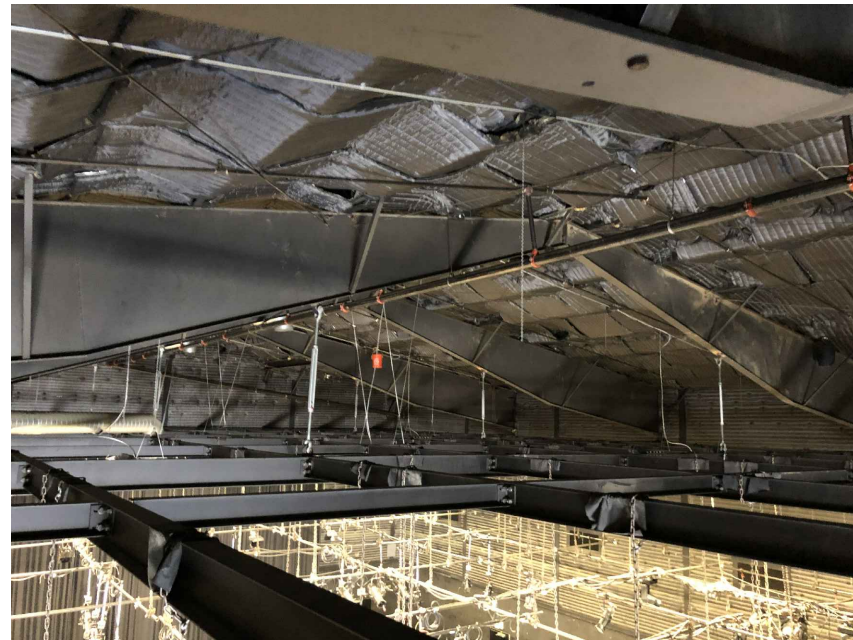


PARTIAL ISO VIEW
 N.T.S.

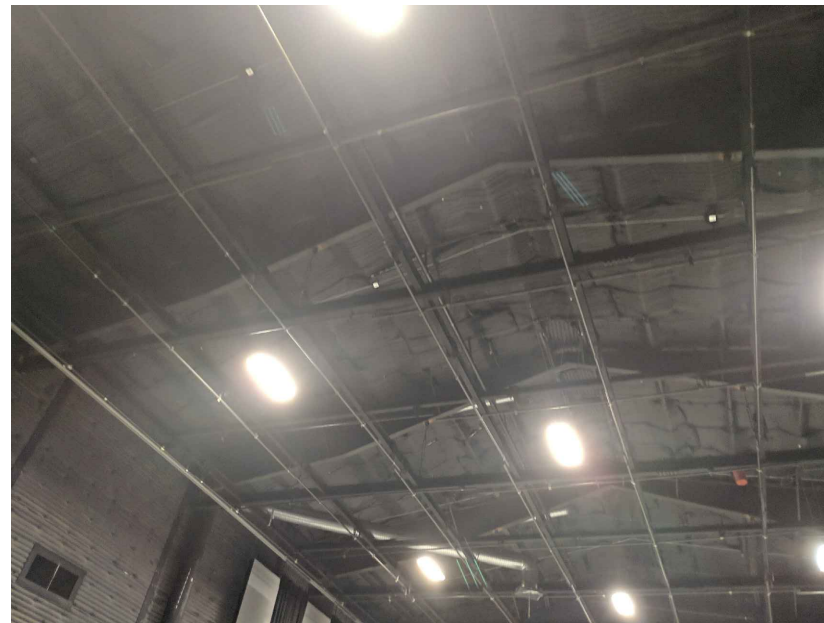


GENERAL NOTES:

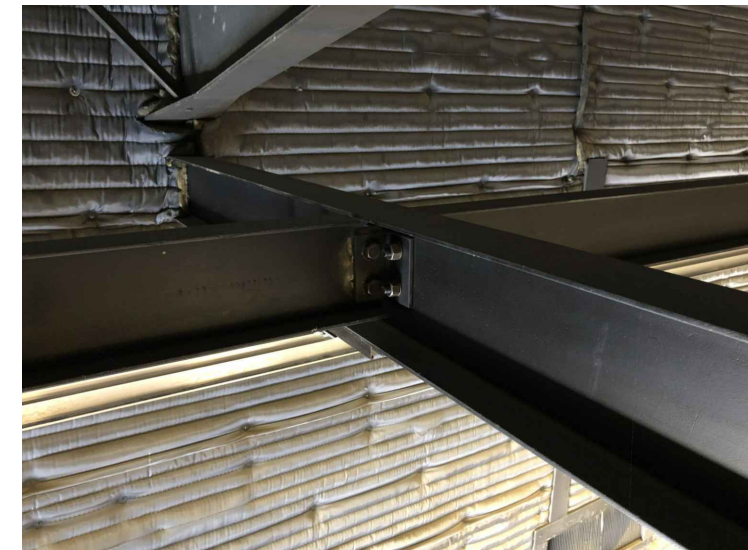
- LOADING SCENARIOS OTHER THAN THOSE SHOWN ON SHEETS 2 & 3 MUST BE VERIFIED BY A CA LICENSED ENGINEER.
- RIGGING COMPONENTS AND CONFIGURATIONS FOR ANY SINGLE LOAD EXCEEDING 5,000 LB MUST BE VERIFIED BY A CA LICENSED ENGINEER.
- RIGGING COMPONENTS AND CONFIGURATIONS FOR A TOTAL ROOF LIVE LOAD EXCEEDING 42,000 LB MUST BE VERIFIED BY A CA LICENSED ENGINEER.
- ADDITIONAL ROOF LIVE LOADS SUCH AS LARGE NUMBERS OF PEOPLE AND/OR MISCELLANEOUS EQUIPMENT IS NOT ALLOWED SIMULTANEOUSLY WITH THE RIGGING LOADS PROVIDED. IF ADDITIONAL ROOF LIVE LOADS ARE ANTICIPATED, THE LOADING MUST BE VERIFIED BY A CA LICENSED ENGINEER.
- A 1.3 DYNAMIC FACTOR IS INCLUDED IN ALL ALLOWABLE LOADS PROVIDED IN THIS DOCUMENT.
- MODIFICATIONS TO THE STAGE MADE AFTER JUNE 2019 MAY AFFECT THE LOAD CAPACITIES ON SHEETS 2 & 3
- PERMANENT GRID MUST NOT BE USED AS A FALL PROTECTION SYSTEM.
- A ROOF LIVE LOAD OF 3PSF WAS USED IN THE ASCE 7-10 LOAD COMBINATIONS FOR THIS ANALYSIS. THIS IS NOT CONSISTENT WITH THE CODE ROOF LIVE LOAD OF 12 PSF.



TYPICAL ROOF MEMBERS



VIEW FROM GROUND LEVEL



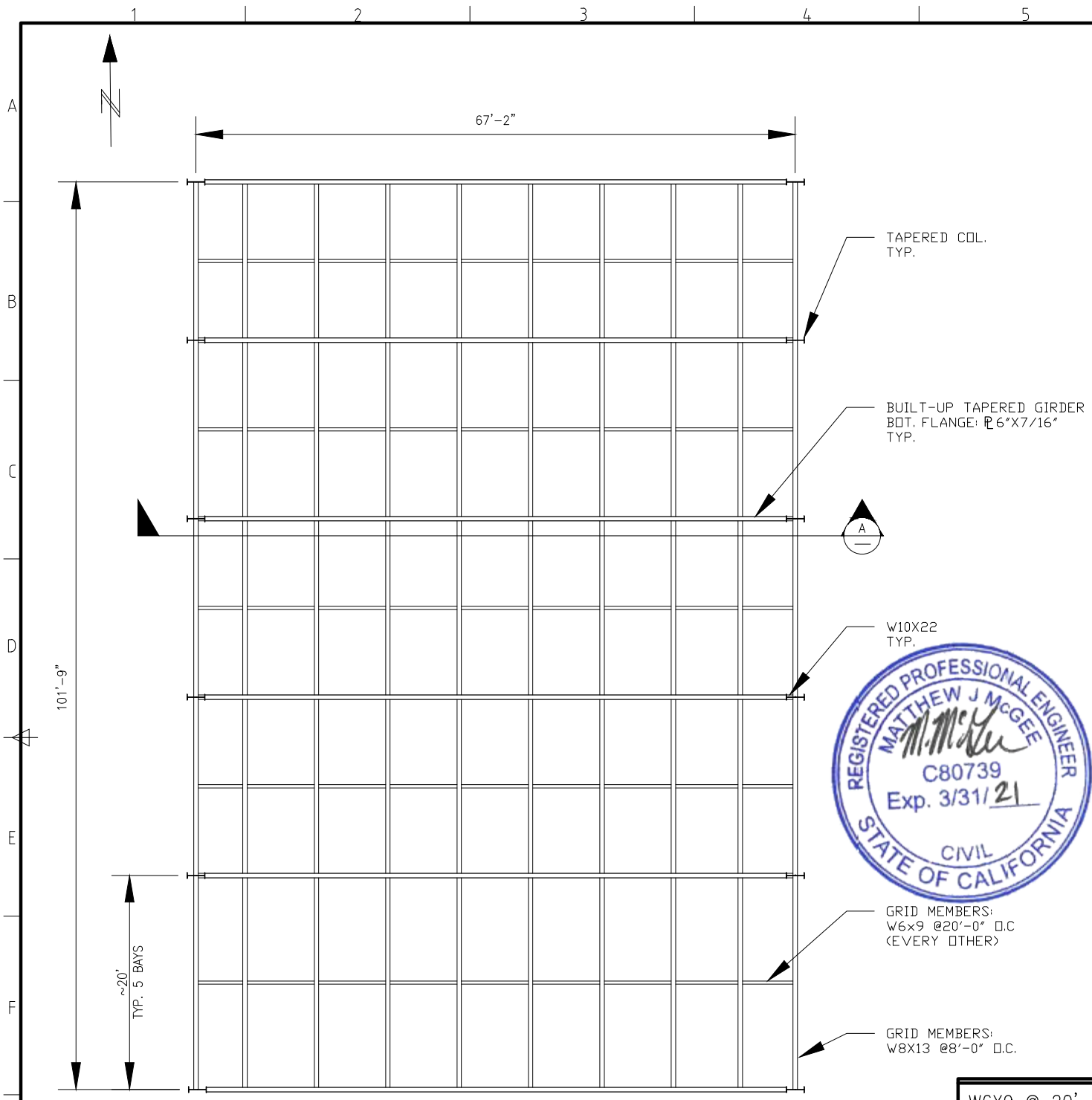
TYPICAL CONNECTION

DWG NUMBER	TITLE	DATE	REV	DESCRIPTION	REVISIONS	EJP BY	MM CHK'D	JB APPR'V
	REFERENCE DRAWINGS	6/13/19	0	ISO VIEW AND STAGE INFO				

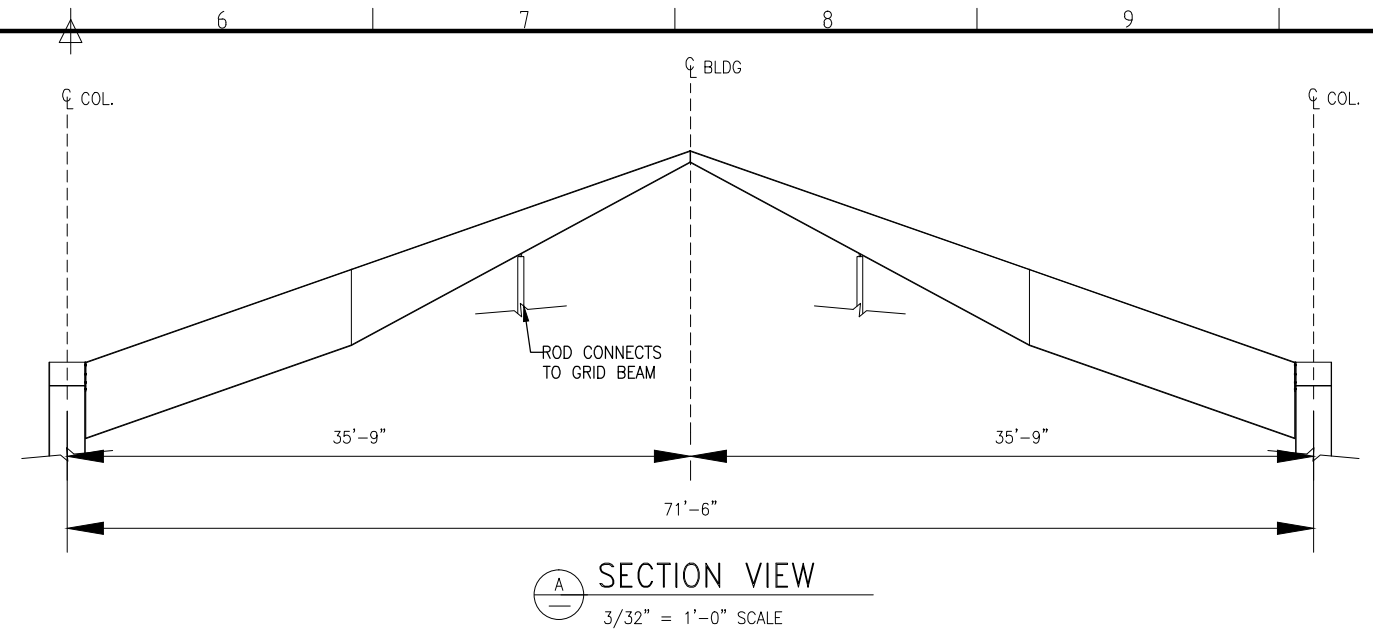
DRAWN BY:	EJP	CHK'D BY:	MM
DESIGNED BY:		APPV'D BY:	JB
JOB NO.:	PR2_759	SCALE:	AS NOTED
CAD FILE:		DATE:	6/13/19

ENGINEER: **HOPPER ENGINEERING ASSOCIATES**
 300 VISTA DEL MAR
 REDONDO BEACH, CALIFORNIA 90277
 (310) 373-5573
<http://www.hopperengineering.com/>

SHEET TITLE:				ISO VIEW AND STAGE INFO			
PROJECT/OWNER:				SHOWBIZ STUDIOS STAGE 4			
				15521 LANARK STREET			
				VAN NUYS, CA 91406			
HEA DRWG NO.		DRWG NO.		SHT NO.	REV.		
				1	3 0		



STRUCTURAL ROOF PLAN VIEW
1/16" = 1'-0" SCALE



SECTION VIEW
3/32" = 1'-0" SCALE

ROOF GIRDER LOAD TABLES

ROOF GIRDER LOADING SCENARIO (SEE SHT. 3 OF 3)	ALLOWABLE LOAD (LB OR PLF)
1) ALLOWABLE MIDSPAN POINT LOADS ON GIRDER	4,600 LB
2) ALLOWABLE THIRD POINT LOADS ON GIRDER	3,400 LB
3) ALLOWABLE QUARTER POINT LOADS ON GIRDER	3,000 LB

PERM LOAD TABLES

	UNIFORMLY DIST. LOAD	CENTER POINT LOAD	THIRD POINT LOADS	QUARTER POINT LOADS
W6X9 @ 20'-0" O.C.	130 PLF	P= 2,100 LB	-	-
W8X13 @ 8'-0" O.C.	90 PLF	P= 1,070 LB	-	-
W10x22 @ 20'-0" O.C.	95 PLF	P= 1,340 LB	P= 2 @ 750 LB	P= 3 @ 600 LB

NOTES: BOTH TAPERED STEEL GIRDER AND GRID CANNOT BE SIMULTANEOUSLY LOADED TO THE MAXIMUM. LOADING SCENARIOS NOT SHOWN MUST BE FURTHER ANALYZED BY AN ENGINEER. FULLY LOADING MULTIPLE BEAMS IN A LOCALIZED AREA WILL OVERSTRESS GRID MEMBERS. IF TOTAL LOADS ARE EXPECTED TO EXCEED 4,600 LB IN 24'X24' AREA (575 SQ. FT), MUST VERIFY WITH ENGINEER.



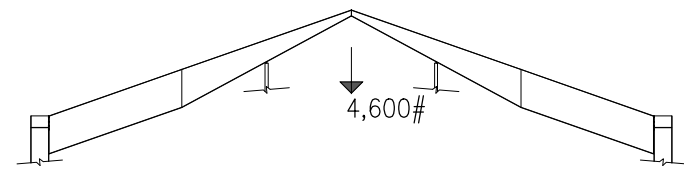
DWG NUMBER	TITLE	DATE	REV	DESCRIPTION	BY	CHK'D	APPR'V
	REFERENCE DRAWINGS	6/13/19	0	ISO VIEW AND STAGE INFO	EJP	MM	JB
				REVISIONS			

DRAWN BY: EJP
 DESIGNED BY: PR2_759
 CAD FILE:
 ENGINEER: HOPPER ENGINEERING ASSOCIATES

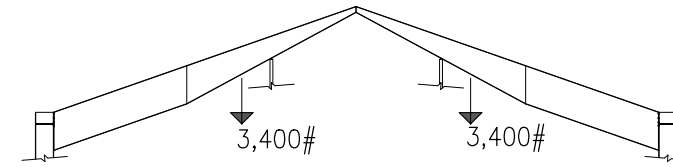
 300 VISTA DEL MAR
 REDONDO BEACH, CALIFORNIA 90277
 (310) 373-5573
<http://www.hopperengineering.com/>

SHEET TITLE: PLAN AND SECTION VIEW	
PROJECT/OWNER: SHOWBIZ STUDIOS STAGE 4 15521 LANARK STREET VAN NUYS, CA 91406	
HEA DRWG NO.	DRWG NO.
SHT NO.	REV.
2	3 0

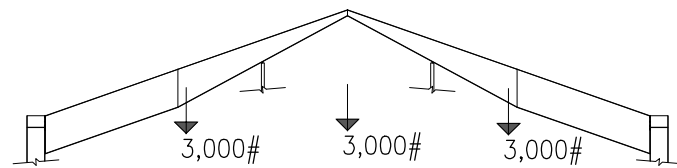
① ALLOWABLE MIDSPAN POINT LOADS ON GIRDER



② ALLOWABLE THIRD POINT LOADS ON GIRDER



③ ALLOWABLE QUARTER POINT LOADS ON GIRDER




ROOF GIRDER LOADING SCENARIOS – ELEVATION VIEW

3/64" = 1'-0" SCALE



DWG NUMBER	TITLE	DATE	REV	DESCRIPTION	BY	CHK'D	APPR'V
	REFERENCE DRAWINGS	6/13/19	0	ISO VIEW AND STAGE INFO	EJP	MM	JB
				REVISIONS			

DRAWN BY:	EJP	CHK'D BY:	MM
DESIGNED BY:		APPV'D BY:	JB
JOB NO.	PR2_759	SCALE:	AS NOTED
CAD FILE:		DATE:	6/13/19
ENGINEER:	 HOPPER ENGINEERING ASSOCIATES 300 VISTA DEL MAR REDONDO BEACH, CALIFORNIA 90277 (310) 373-5573 http://www.hopperengineering.com		

SHEET TITLE:		ROOF GIRDER LOADING SCENARIOS	
PROJECT/OWNER:		SHOWBIZ STUDIOS STAGE 4 15521 LANARK STREET VAN NUYS, CA 91406	
HEA DRWG NO.	DRWG NO.	SHT NO.	REV.
		3	0